



National Fire Authority  
FIJI

# Geographic Information Systems contribution to NFA's Modernization Program

FGIMC Meeting  
4<sup>th</sup> April 2023 Tuesday  
Holiday Inn, Suva

Dennis Laxamana Quesada  
Manager ICT  
National Fire Authority

1. NFA Background
2. National Command Centre Evolution
3. Integration of GIS to Computer Aided Dispatch (CAD) System
4. Summary

# NFA Background



- Government body established under the National Fire Service Act of 1994 with Headquarters at Argo Street, Walu Bay, Suva.

Provides:

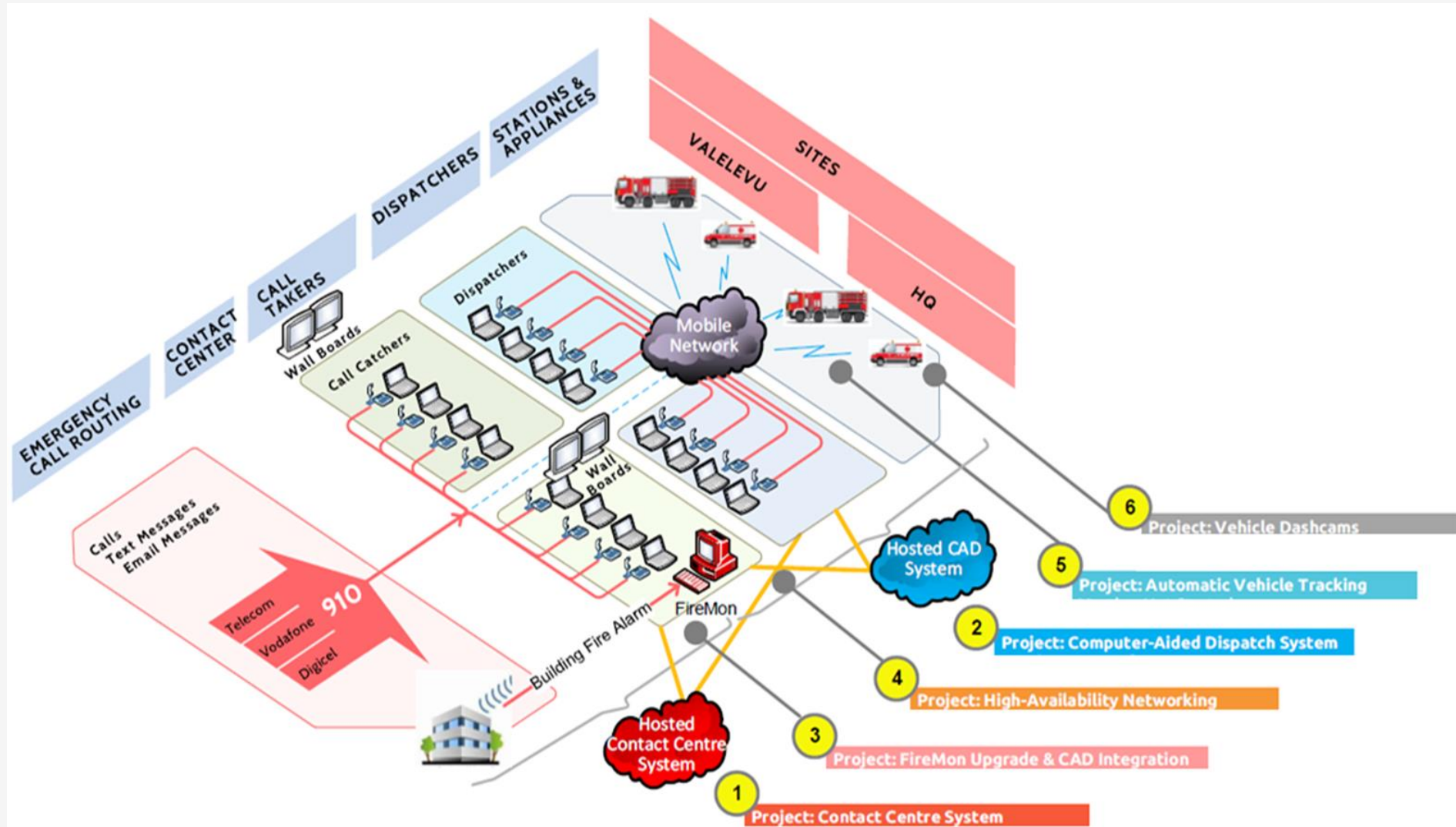
- Fire, Ambulance and Rescue services within Fiji that will **protect life, property and economic activities**.
  - Real-time monitoring of Fire Alarms in Buildings connected to the NFA's Fire Monitoring Network.
- Consists of 21 Fire Stations around the country.
    - Central: (9) Levuka, Korovou, Pacific Harbour, Navua, Lami, Suva, Valelevu, Nakasi, Nausori*
    - Western: (7) Rakiraki, Tavua, Ba, Lautoka, Nadi, sigatoka, Korolevu*
    - Northern: (5) Labasa, Savusavu, Seaqaqa, Nabouwalu, Taveuni*
  - Launched the "910" NFA dedicated toll-free national emergency line in **October of 2021** providing access to Emergency Services provided by NFA.
  - The Authority is undergoing a modernization program of its information and communications technologies and capabilities **with the goal of improving the management and response to Fire Incidents and Emergency Services**.

# National Fire Authority – National Command Centre Evolution



- Prior to April 2021, Emergency calls on “910” were decentralized by Regions and handled at 3 distinct Regional Command Centres:
  - Western division received by Lautoka Fire Station
  - Northern division received by Labasa Fire Station
  - Central division received by Suva Fire Station
- Proposed communication architecture was to set up a single, centralized **National Command Centre (NCC)** for the NFA at its Head Office in Walu Bay, Suva (Primary Site).
- The **Centralized (National) Call Centre System and Computer-Aided Dispatching (CAD) System** projects commenced with **scoping and tender assessments in 2018-2019**
- Implementation of both projects commenced in **November 2019** with key stakeholders such as the **Ministry of Lands & Mineral Resources, Telecommunication carriers, Fiji Roads, Fiji Police, EFL and WAF.**
- The system went **LIVE in April 2021** and on **27<sup>th</sup> February 2023**, His Excellency The President of the Republic of Fiji officially launched NFA's Emergency Digitization Project.

# National Fire Authority – Modernization Program



# National Fire Authority – National Command Centre



# Integration of GIS to CAD System



- Pinpoint exact addresses and street names when logging an incident.

Called Number

Type of Call \*

Originating System

Originating Number

Originating Provider

Location Option

Search Location (or Add location by Clicking)

Short Description

Caller Name \*

Caller Mobile/Phone

Alternate Mobile/Phone

E-mail

Entry Type

Map info

Address: Enter an incident location

Select Proximity (in Metres)

Select Proximity

Select Alias Location

Select Alias

Latitude: -18.14603831293355 Longitude: 178.42639625072402

Location Search from Layers

Eri Streets

Eri Imagery

Eri Topo

Overlay Layers

Parcel

Roads | FRA

Fire Hydrants

Schools

- Dispatching nearest Emergency Vehicle to an incident.

Dispatch Incident

Currently there are no other related requests ...

Change Status

Select Proximity (in meters)

2500 M

Since Answered

04:26:26

Since Request Logged

10:08:00

Select Nearest Vehicle

Pumper Truck - F52, 2.43km - Available -Korolevu Fire Station

Select Supporting Vehicle

Select Supporting Appliance(s)

Lat: -18.153990423824

Long: 178.423671126365

UNDISPATCHED REQUESTS

Request No	Date Added	Originating System	Incident Type	Incident Location	Closest Vehicle	Since Answered	Dispatcher	Merge
No data available in table								

Showing 0 to 0 of 0 entries

Cancel Dispatch

# Integration of GIS to CAD System



- More Incident-Related Information made available to Emergency Vehicles.

### INCIDENT

Commanding	Tanker Truck - F44
Incident ID	7817 (NPSAP-7817)
Type	CHAN...
Caller Name	QFF Paul Moses
Caller Contact	
Incident Description	Last updated on 15:02:11

No Updates.

Short Description	Test1 House on Fire
FireMon Building	X
PRE-RESPONSE PLAN	
CLASSIFICATION	
From Origination	10:04:10
From Dispatched	00:01:59
From Departed	--:--:--

#### Skin Haven Spa, 30 Knollys St, Suva, Fiji

Use Native Maps Navigation

Estimated : 4 min      Distance : 2.1 km

- Turn right onto Nailuva Rd
- Turn left onto Rewa St
- Continue onto Bau St

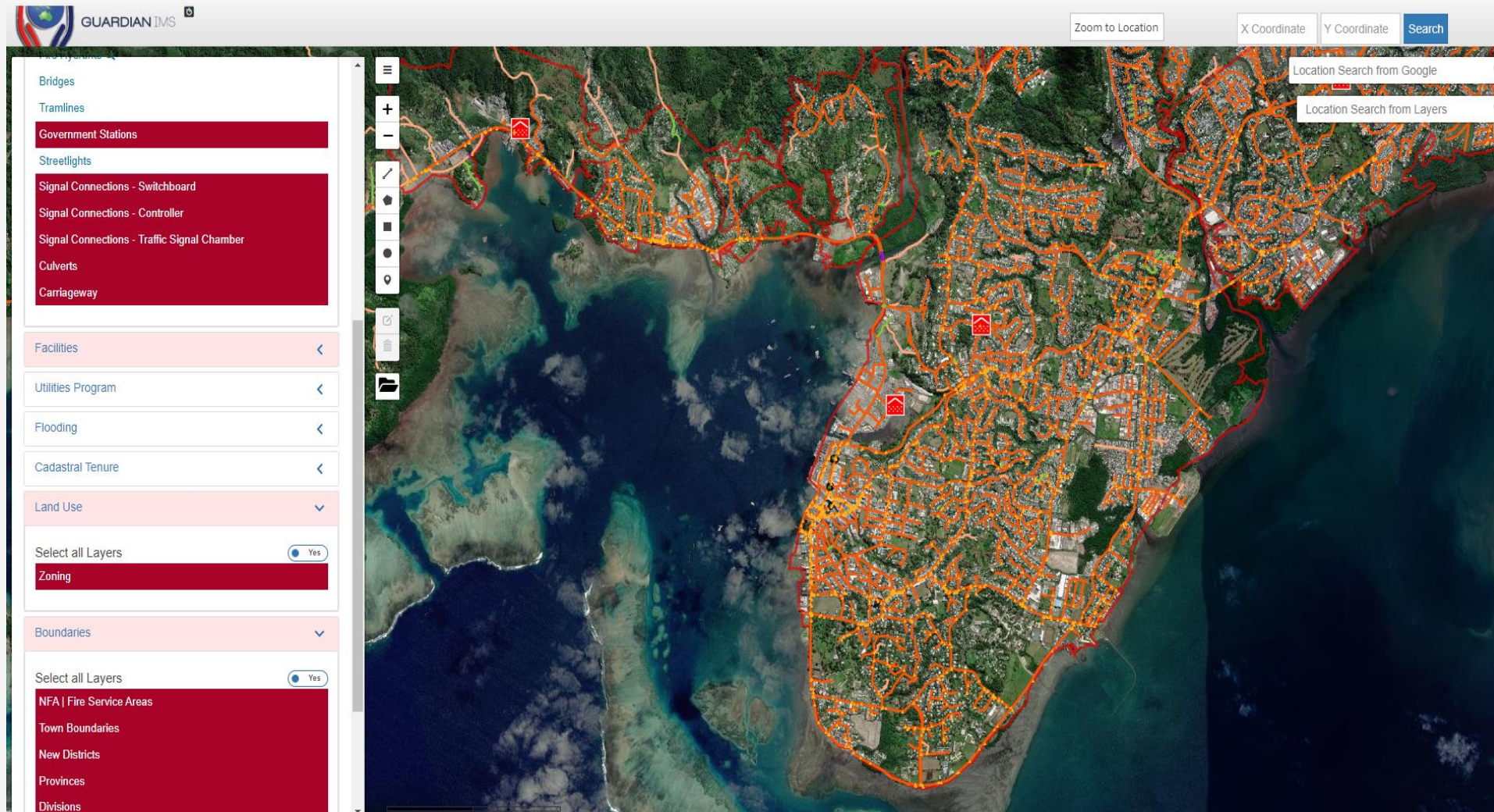
VEHICLE STATUS    TRANSFER COMMAND    RESOURCE USAGE    DEPARTED    UPDATES    COLLECT SCENE INFO    PFA





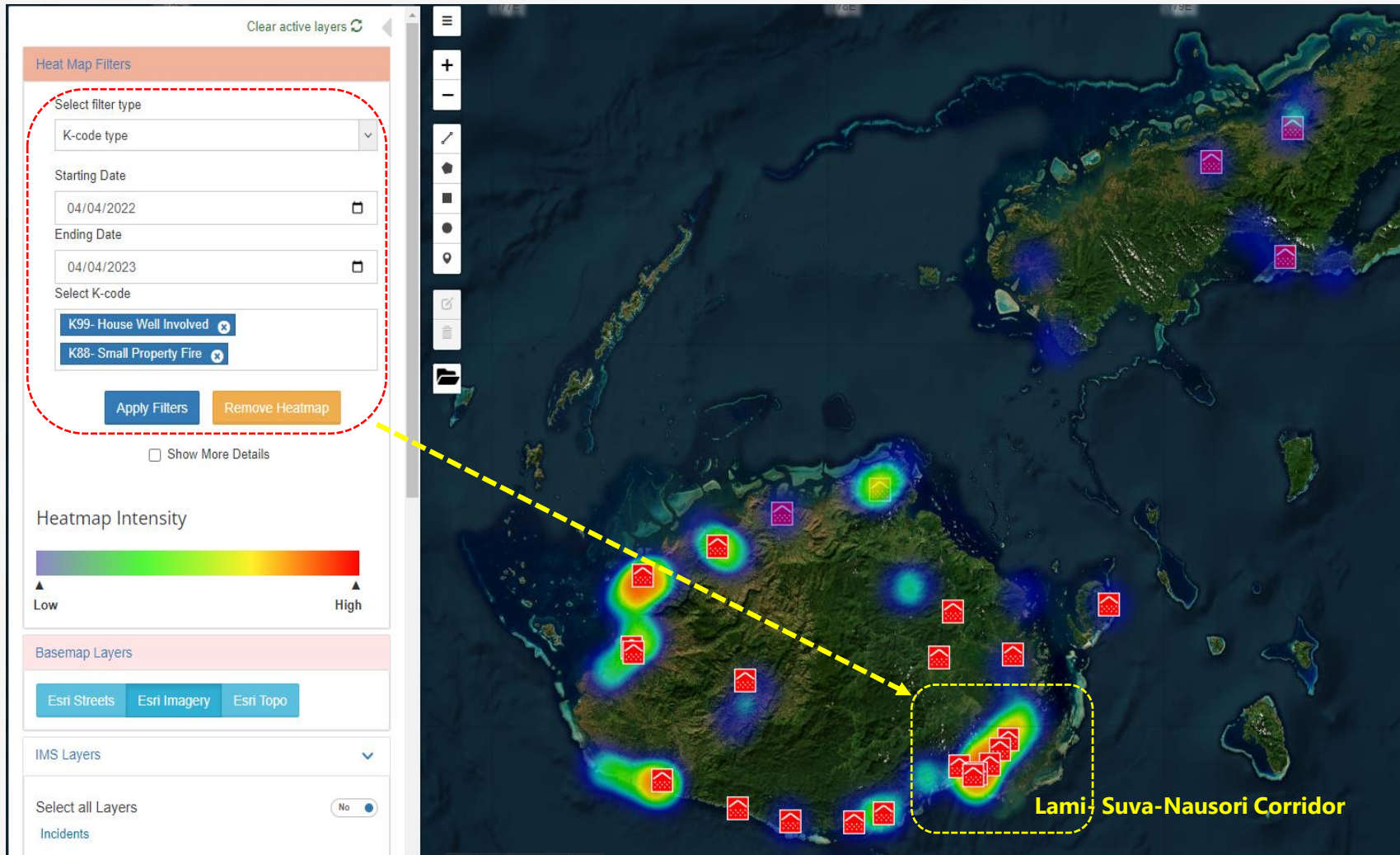
# Integration of GIS to CAD System

- NFA's CAD application using layers compiled by the Ministry of Lands and Mineral Resources on Vanua GIS.



# Integration of GIS to CAD System

- NFA's CAD System Heat Map



# Future Plans .....

- Location of the Emergency Calls



# Summary

---



- Information collected from VanuaGIS spatial coordinates for land boundaries, area or size, road and street names, names of waterways, and government facilities are used to create interactive queries (user-created searches), analyze spatial information, edit data in maps, and present the results of all these operations to the CAD application.
- The Centralized Contact Call Centre and CAD projects lead the transformation of the Authority's existing paper-based emergency management operations to a fully digitized process. Both projects enable NFA to deliver end-to-end incident logging, status tracking, and updates until the incident is closed.
- It is clear that the NFA's Computer-Aided Dispatch application with GIS capabilities has become a valuable management tool to improve the effectiveness and efficiency of incident management by introducing a combination of facilities, equipment, personnel, procedures, information, technology, and communications operating among emergency response organizational structure and it has been accepted worldwide. The NFA CAD System can cater for other Agencies of Government if needed.
- Implementing CAD Systems in Fiji amongst other agencies (**Fire & Rescue Services, Law Enforcement, Emergency Medical Services, Disaster Management**) of Government will create a good platform for coordinating and communicating among all Search, Rescue and Emergency Services and will enable effective and efficient incident management and response in the country.

# Thank you

